

# CLEVERTOUCH

---

## PRO SERIES



---

So advanced you'll only ever  
touch the surface


---

**Made for Business**

#clevertouch



# CLEVERTOUCHPRO 65" / 75" / 86" <sup>NEW</sup>

Powered by 

20-point touch 

Clevertouch have combined superior connectivity, innovative software, and a simple user interface to create their most enhanced model yet. Designed for business, **Clevertouch Pro** screens feature a dual-platform interface and a cross-platform connectivity structure, allowing complete collaboration in the workplace.

65" 4K Code: 1541029/1 | 75" 4K Code: 1541028 | 86" 4K Code: 1541032

### Connectivity

includes HDMI, VGA, RS232 and USB.

DisplayPort <sup>NEW</sup>

HDMI out <sup>NEW</sup>

2 x 12w  
**integrated speakers.**

### PC module features <sup>NEW</sup>

i5 model Code: 1541041 | i7 model Code: 1541042

Operating System: Windows 10 Pro  
i5 model: 4GB RAM, 128GB SSD  
i7 model: 8GB RAM, 256GB SSD  
1 x Wireless Network Interface 802.11ac (2.4GHz/5GHz)  
1 x Wired Network Interface (10/100/1000Mbps)  
6x USB 3.0  
1x Display Port  
1x HDMI 4K Video Output  
1 x VGA Output  
Available for 75" and 86" <sup>NEW</sup>

### Android module features <sup>NEW</sup>

Operating System: Android v5.1  
2GB DDR3 RAM  
16GB (EMMC Flash) Storage  
LUX interface (proprietary to Clevertouch)  
1 x Wireless Network Interface 802.11ac (2.4GHz/5GHz)  
1 x Wired Network Interface (10/100/1000Mbps)  
2 x USB 2.0  
Bluetooth 4.0  
Available for 75" and 86" <sup>NEW</sup>

2 **USB** ports left /  
2 **USB** ports right.

**Annotation tools** let you annotate over internet browsers, documents, apps or desktop. Pen colours in red, black, blue & green, plus yellow highlighter <sup>NEW</sup>

**Freeze Frame** and other key functions available using the remote control.

**UHD resolution.**

**Stylus.**

**Power/Menu** buttons.

**Clevertouch Pro** now with 5 year on-site de-install/re-install warranty (UK mainland)



Compatible with **Windows, Mac OS X** and **Chromebook**



CLEVERSHARE

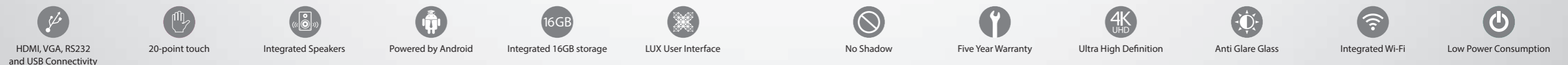
LYNX

LYNXPRO

LYNXPROMEETING

MONTAGE LITE

**All Clevertouch Pro models feature:**



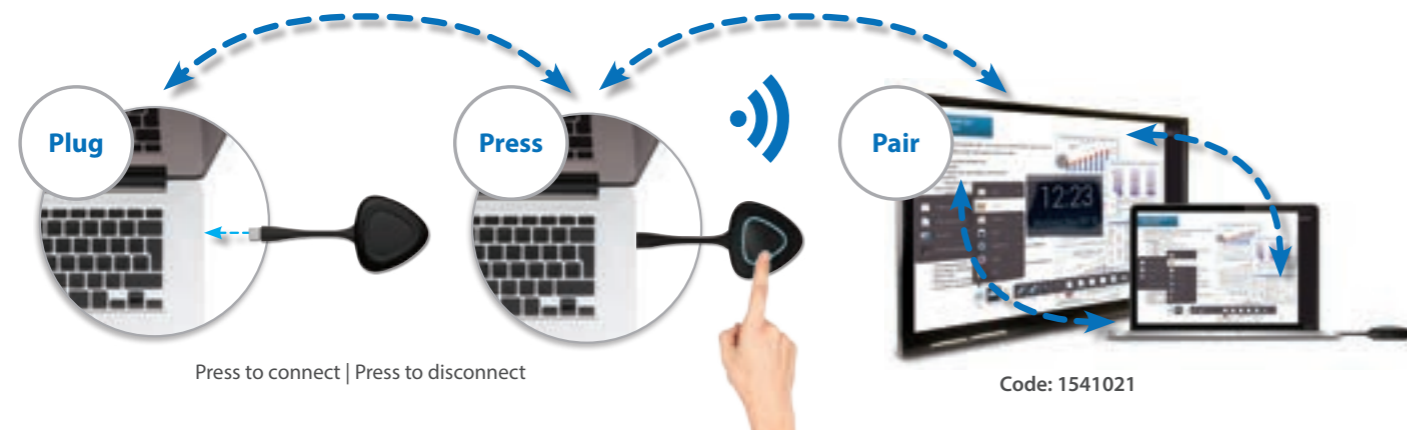
# CLEVERSHARE

## Revolutionary New Ways to Collaborate

### Wirelessly transmits Video, Audio and Touch

With the **CleverShare wireless device** you can control the **Clevertouch Pro** from anywhere in the room, without the need for any wires. Simply plug the **CleverShare** into your laptop's USB port and you can show and edit your laptop's content on

the Clevertouch screen. You can instantly display your desktop and control from your computer or **Clevertouch** – your pen or finger becomes your mouse.



### wePresent 2000 Code: 1520160

The **wePresent 2000** is the perfect solution for all meeting rooms and executive boardrooms. The **wePresent WiPG-2000** wireless presentation system has advanced features like an onboard USB media and document player, a streaming-video player, and 1-to-4 network video distribution capabilities.

### SharePod Code: 1520162

The **SharePod** is a unique pairing solution to wirelessly connect any HDMI source into a wePresent environment. Pair the **SharePod** with a **WiPG-2000**, enabling seamless collaboration in meetings and classrooms.



2 devices included with every Clevertouch Pro (UK only)

# MONTAGE

by DisplayNote Technologies

## Capture, Contribute, Share Content, Collaborate

**Montage** is a solution that helps you meet smarter, see clearer and decide better - bringing together wireless presentation, communication & collaboration and designed to make meetings as productive and effective as possible.

Using Montage in meetings allows you to save time and keep everyone on the same page by letting up to 4 key contributors and decision makers fully participate, whether they're across the room or across the world. All attendees can stream what's on their devices to a main display, all at the same time and without the need to fight IT problems and struggle with cables.

- 4 Attendee Screens**  
Up to 4 devices connected and shown simultaneously
- File Share**  
No need to leave Montage to share content directly
- In-room & Remote**  
Join from across the room or across the world
- Secure**  
Password protected access
- Annotation**  
Add emphasis to content and expand on ideas
- Active Display**  
Any attendee can go full screen on the main display
- Need more connections, video and audio?** Upgrade to the Montage box.
- Multi-Platform.** No matter what device you have, now you can wirelessly stream to your large format display.

## LynxPro Meeting



### Comprehensive tools

With multiple pens, colours, and gestures getting your message across has never been easier.

### Meeting templates

A selection of templates are available, so you can easily brainstorm, plan, and exchange ideas, without the need for lots of pre-meeting prep.

### Choose and annotate over your files

You can import files including video, pdfs, office documents, and images, and annotate and make notes over them. You can also switch to desktop mode, to annotate over any software that you have on your PC.

### Personalised custom settings

Users can customise brushes and background canvas settings to fully meet the demands of the activity.



## Why Choose Clevertouch Pro?

### Combine functionality and simplicity...

Re-invent your boardroom, office, or meeting room with **Clevertouch Pro**

- It works just like a flipchart or whiteboard, but it's digital – simply turn it on and start writing.
- Pre-installed apps make it easy to open and edit most file types – office documents, pdfs, audio, 4K video, and images.
- Connect mobile devices in the room, or globally.
- Share notes instantly when you're finished using email, save and Cloud functions... all without a computer.



### Want to start a meeting?

It's as simple to use as a tablet – just turn on and go. All your apps and files are just one click away. Open a document from the internal memory, from a USB stick, or wirelessly upload to the **Clevertouch Pro**.



### Want to wirelessly connect or BYOD?

- Use the **CleverShare** device to connect your PC without wires.
- View images, play a video, or share documents from your PC, tablet or phone, by downloading the **E-share** app on to your mobile device.
- Using the **Montage** app connect your PC, iOS, or Android device and collaborate, annotate and share documents.



### Want an electronic flipchart?

Use the LynxPro app to bring up a whiteboard. Simple to use with built-in gesture control allowing the user to add pages, roam and expand with a swipe. Send out the notes to all meeting attendees via email instantly, or save them directly onto USB.

Product –Code	1541029/1	1541028 With 1541044	1541032 With 1541044
Description	65" Pro LUX 4K	75" LUX Pro 4K	86" LUX Pro 4K
<b>Display</b>			
Touch Points	10	20	20
Screen Type	LED	LED	LED
Aspect Ratio	16:09	16:09	16:09
Resolution	Ultra HD	Ultra HD	Ultra HD
Brightness (cd/m2)	450	330	330
Audio	2x10W	2x12W	2x12W
Android	✓	✓	✓
Glass	Anti Glare	Anti Glare	Anti Glare
<b>Connectivity</b>			
CVBS	✓	✓	✓
VGA Input	3	3	3
USB 2.0	5	6	6
USB 3.0	1	1	1
USB Touch	1	2	2
DisplayPort in	0	1	1
HDMI 1.4 In	4	2	2
HDMI 2.0 In	0	1	1
HDMI Out	0	1	1
PC-Audio	✓	✓	✓
R/L (CVBS)	With video IP	With video IP	With video IP
VGA Output	✓	✓	✓
LAN (RJ45)	✓	✓	✓
RS232	✓	✓	✓
Module Slots	1	2	2
<b>Power &amp; Warranty</b>			
Power	<250W	<450W	<530W
Power (in standby)	<0.5W	<0.5W	<0.5W
Warranty (on-site de/re UK)	5 year	5 year	5 year
<b>Physical Specs</b>			
Dimensions W x H x D (mm)	1544 x 913 x 98	1778 x 1031 x 99.6	2003 x 1176 x 99.6
Weight	66kg	58kg	75kg
VESA (mm)	400 x 400	800 x 400	800 x 600
<b>Android Capabilities</b>			
System Version	Android 4.4 KitKat	Android 5.1 Lollipop	Android 5.1 Lollipop
CPU	ARM Cortex A17 Quad Core	ARM Rockchip 3288 up to 1.8GHz	ARM Rockchip 3288 up to 1.8GHz
Android Resolution	1080p	1080p	1080p
GPU	Quad Core	Quad Core	Quad Core
RAM	2GB (DDR3)	2G	2G
ROM	16GB	16GB	16GB
Wi-Fi Enabled	✓	✓	✓
<b>Apps and Software</b>			
Email Out	✓	✓	✓
Lynx App	✓	✓	✓
LynxPro	✓	✓	✓
LynxPro Meeting	✓	✓	✓
Montage Lite	✓	✓	✓
<b>Accessories</b>			
USB Camera Ability	✓	✓	✓
Writing Pen or Stylus	✓	✓	✓
VGA, Audio Cables	✓	✓	✓
HDMI, USB Cables	✓	✓	✓
Clevershare	✓	✓	✓